

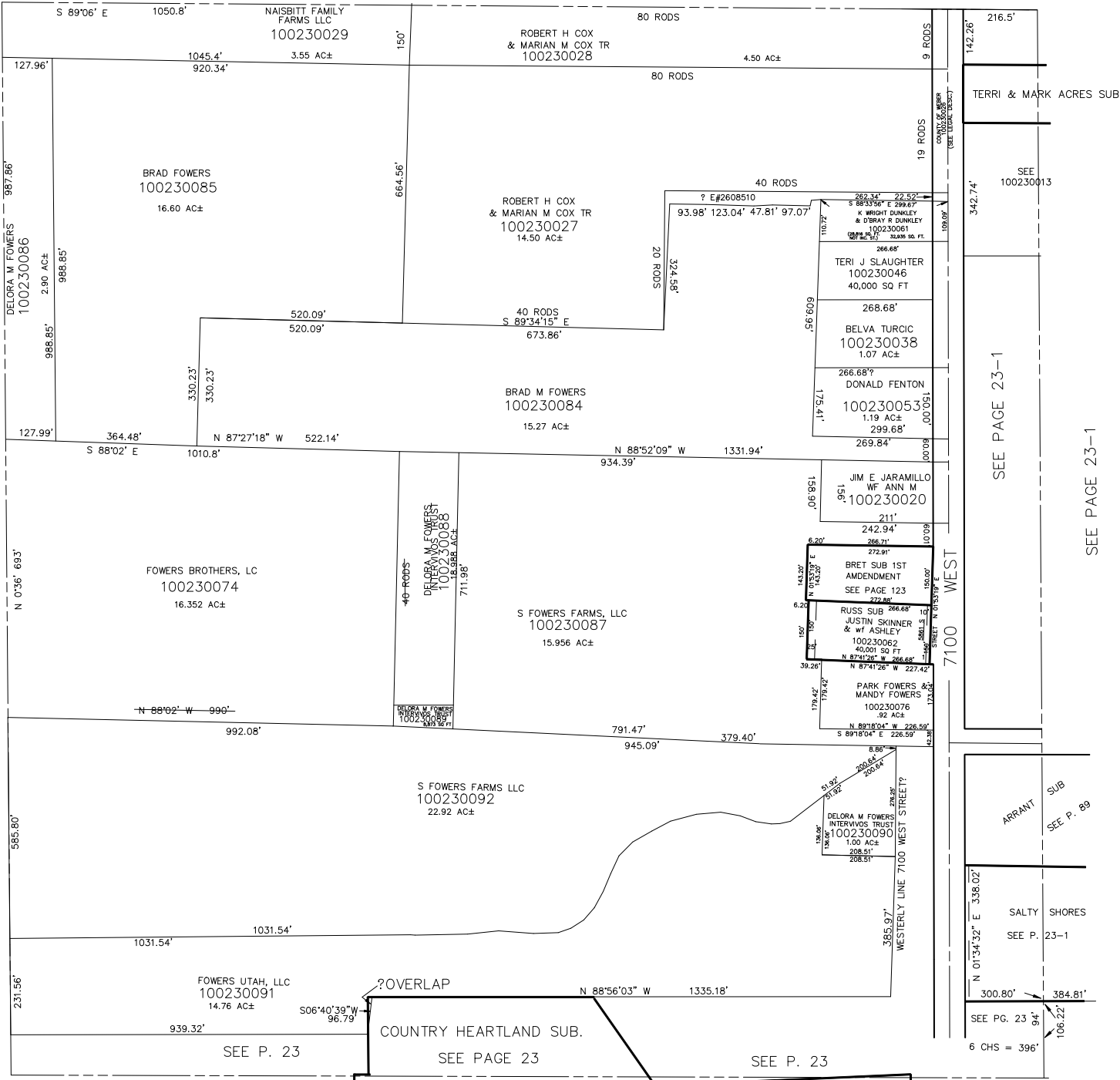
NW.1/4  
SECTION 23, T.5N., R.3W., S.L.B. & M.

IN HOOPER CITY

1" = 200'

SEE PAGE 19

TAXIN UNIT: 31



SEE PAGE 22

SEE PAGE 23-1

SEE PAGE 23-1

SEE PAGE 23

SEE P. 23

SEE PAGE 23

SEE P. 23

SEE PG. 23 94'

6 CHS = 396'